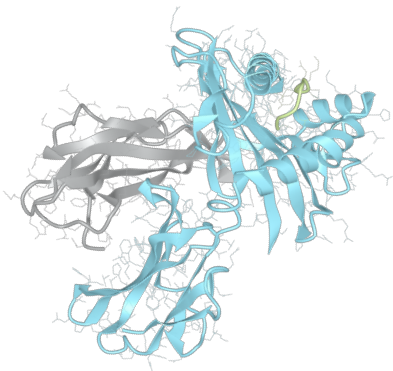


Product datasheet



sHLA-C*07:01

Cw*07:01, Cw*0701, C*0701, C0701
Cw0701, C*07, C07, Cw*07, Cw07, Cw7

Serological Name	Cw7
Peptide Load	Endogenous
Modification	Unmodified
Conjugation	Unconjugated
SKU	C0701

Product Description

Allele Name	C*07:01 B2m
HLA Class	HLA Class I
HLA Gene Locus	HLA-C
Alternative Allele Name A Chain	Cw*07:01, Cw*0701, C*0701, C0701, Cw0701, C*07, C07, Cw*07, Cw07, Cw7
Alternative Allele Name B Chain	-
Description	Recombinant, truncated Class I soluble Human Leukocyte Antigen (sHLA), naturally folded and glycosylated, loaded with endogenous peptides.
Serological Name	Cw7
Serological Split	-
Bw4/Bw6 Assignment	Bw6
Bw4/Bw6 Sequence	SLRNLRG
Allele Frequency [World Population]	
A chain	7.4%
B chain	-

Associated products

[C0701bio](#)
[C0701pe](#)

Product Specification

Product name	HLA-C*07:01
HLA Species	Human
Host Cell Line Species	Human
Clone Designation	G2A6
Tail Specification	VLDL
Peptide Load	Endogenous
Modification	Unmodified
Conjugation	Unconjugated
Complexity	Monomer
Protein Format	Recombinant, truncated, soluble, non-modified, non-labeled, endogenously loaded
Storage Temperature	4 °C (This product should be stored undiluted)
Form	Liquid
Concentration	1000.0 µg/ml
Formulation	PBS/0.02% Sodium Azide
pH	7.4
Purification Method	Affinity Chromatography
Grade	Research Use Only [RUO]
Authentication Verification	Sequence Based Typing

Protein Sequences

Alpha Chain Sequence	CSHSMRYFDT AVSRPGRGEP RFIISVGYVDD TQFVRFDSDA ASPRGEPRAP WVEQEGPEYW DRETQNYKRQ AQADRVSLRN LRGYYNQSED GSHTLQRMYG CDLGPDGRLR RGYDQSAYDG KDYIALNEDL RSWTAADTAA QITQRKLEAA RAAEQLRAYL EGTTCVEWLR R YLENGKETLQ RAEPPKTHVT HHPLSDHEAT LRCWALGFYP AEITLTWQRD GEDQTQDTEL VETRPAGDGT FQKWAAVVVP SGQEQRYTCH MQHEGLQEPL TLSSVVSTDD DLA
Beta Chain Sequence	IQRTPKIQVY SRHPAENGKS NFLNCYVSGF HPSDIEVDLL KNGERIEKVE HSDLSFSKDW SFYLLYYTEF TPTEKDEYAC RVNHVTLSPQ KIVKWDRDM

Related Products

C0702
C0704
A0201
B0702

Applications

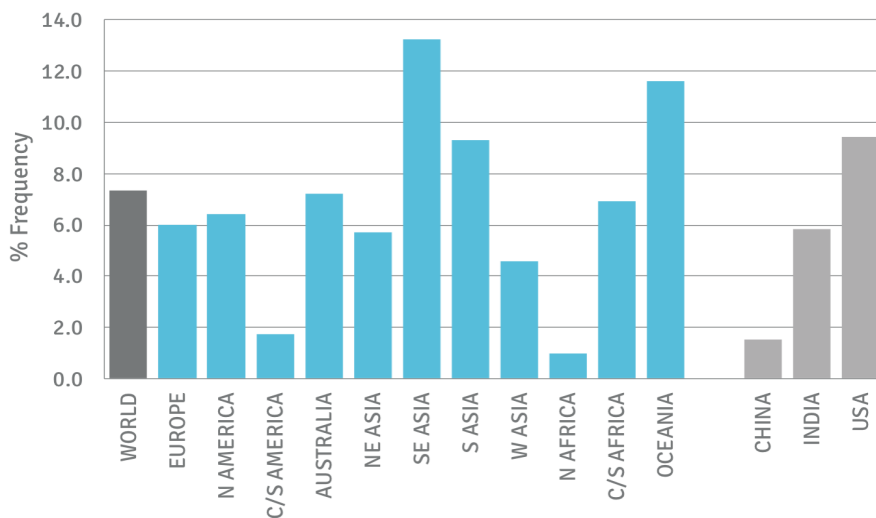
HLA Sandwich ELISAs
 HLA Direct ELISAs
 HLA-Sera Antibody Assays
 HLA Controls in ELISA Assays
 HLA Assay Standards
 HLA Blocking Assays
 HLA Neutralizing Assays
 HLA Competition Assays
 HLA Bead Assays
 HLA Immunization Procedures

Recommended Antibodies

W6/32
 Anti-B2m

Allele Frequency

Worldwide Allele Frequency



C*07:01

Please note:

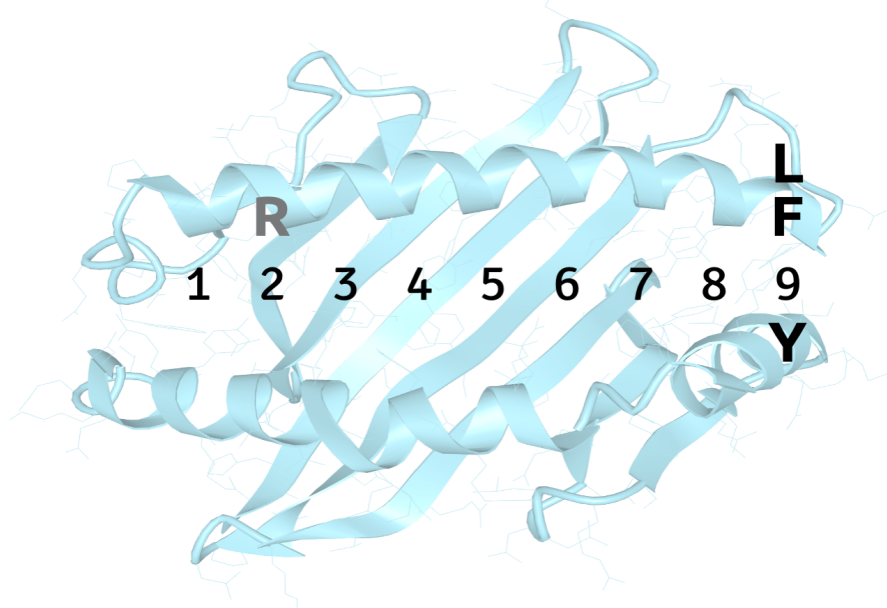
ALL PRODUCTS ARE FOR RESEARCH USE ONLY. NOT FOR COMMERCIAL USE IN DIAGNOSTIC PROCEDURES.
 For more information, please visit our Policies section on our website. For licensing inquiries, please contact

licensing@hlaprotein.com



Motif

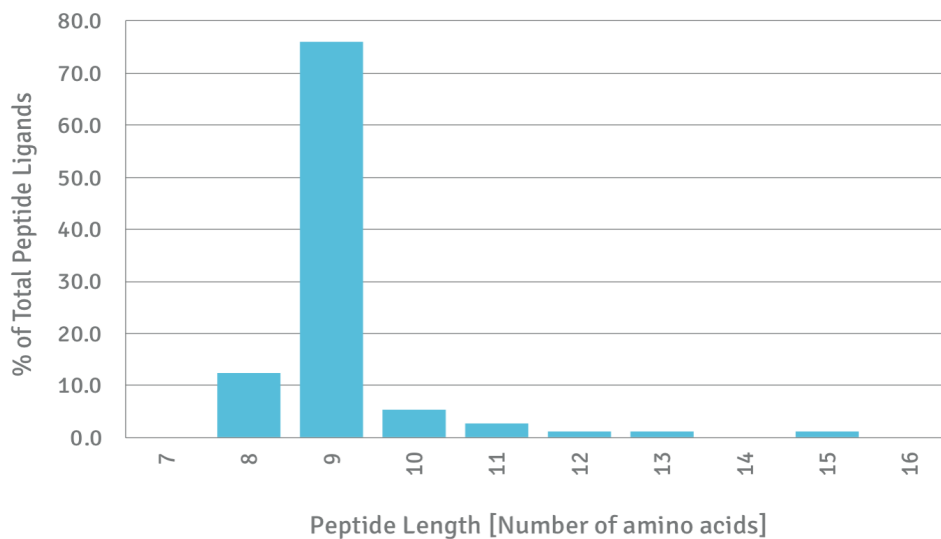
C*07:01 BINDING MOTIF



Length Distribution

HLA Length Distribution

C*07:01



Please note:

ALL PRODUCTS ARE FOR RESEARCH USE ONLY. NOT FOR COMMERCIAL USE IN DIAGNOSTIC PROCEDURES.

For more information, please visit our Policies section on our website. For licensing inquiries, please contact

licensing@hlaprotein.com

Eplet Assignments

C*07:01

Eplet	Polymorphic Residues	Antibody Reactivity
1C	1C	
9D	9D	
11AV	11A12V	
24S	24S	
66N	66N	
69RA	69R73A	
73AS	73A77S	
76VRN	76V79R80N	Yes
76VS	76V77S	
77S	77S	
77SRN	77S79R80N	
80N	80N	Yes
90D	90D	Yes
95L	95L	
97R	97R	
99Y	99Y	
103L	103L	
113YD	113Y114D	
116S	116S	
147L	147L	
152A	152A	
152RA	151R152A	
156L	156L	
163T	163T	
193PL	193P194L (273S)	Yes
253Q	253Q	Yes
267QE	267Q268E	Yes